

KÄRCHER

makes a difference

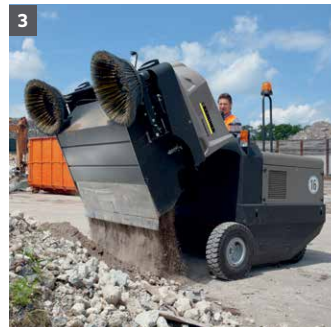


SWEEPING COARSE DIRT TO FINE DUST. NO PROB.

Diesel-powered, ride-on sweeper engineered for the largest industrial jobs.

Industrial sweeper for large, heavy-duty applications.

The KM 170/600 R D Classic is a diesel-powered, fully hydraulic industrial ride-on sweeper with four-wheel drive, and is engineered for heavy-duty jobs in the building materials and metal-working industries, foundries, construction sites and other dirt-intensive sectors. Its direct throw sweeping and main floating brush provide excellent cleaning results of rough swept materials and large amounts of fine dust. Two horizontally installed flat pleated filters not only ensure clean air under heavy dust conditions, but are also automatically cleaned every 10 minutes. This sweeper is robust, easy to maintain, intuitive for operators, and it complies with the new EU Stage V and EPA Tier 4 final emission standards - making it a powerful force for industrial cleaning.



1 Simple and intuitive operation

Simple and intuitive operation via levers and few switches for short operator learning times and machine downtimes

Simple maintenance, easy-access service points and tool-free changing of main brush

2 Premium filtration and emissions standards

This machine doubles the lifetime of your filters - with automatic filter cleaning occurring every 10 minutes

Filters are simple to change - without tools, protecting the operator and the environment

Sweeper complies with the new EU stage V, as well as, EPA Tier 4 final emission standards.

3 Hydraulic waste container

Economic sweeping for the largest surfaces with a 158 gallon waste container and a 5 foot hydraulic container lift

4 Robust and reliable

Maximum area performance of 238,800 ft²/hr due to a 67" cleaning width, 8.7 mph and 18% climbing ability

Long machine lifetime with a robust steel chassis, multi-corrosion protection and fully hydraulic rear traction drive (4-wheel)

Heating and air-conditioning for increased operator comfort and safety

Technical data and equipment.



KM 170/600 R D CLASSIC

TECHNICAL SPECIFICATIONS

Power / Drive	kW	18.5, Diesel, complies with new EU Stage V and EPA Tier 4 emissions standards
Cleaning path/width - main broom	in	53
Cleaning path/width - 1 side broom	in	67
Cleaning path/width - 2 side brooms	in	79
Side broom diameter	in	26
Debris container capacity	gal	158
Practical productivity - 1 side broom / 2 side broom	sq. ft/hr	205,180 / 238,800
Operating Noise Level	dBA	82 - 103
Maximum dumping height	in	60
Minimum turning radius	ft	8.3
Sweeping method	direct/overthrow	direct
Maximum working speed	mph	8.7
Maximum climbing ability	% grade	18
Weight	lbs	3,737
Dimensions (L x W x H)	in	96 x 69 x 65.75

EQUIPMENT

Order No.	Description
9.800-891.0	KM 170/600 R D Classic, 1 side broom, flat pleated filter (10 m2) with automatic filter cleaning system

ACCESSORIES

Order No.	Description
■ 6.987-441.0	Main Roller Brush, regular - standard
■ 6.987-467.0	Side Brush, regular - standard
■ 6.987-969.0	Rear-view mirror
■ 6.988-160.0	Flat pleated filter, green - 2 required to fill the filter compartment
■ 4.515-331.0	Full rubber tire, set of 2 for front tires
<input type="checkbox"/> 2.852-082.0	Front/rear lights
<input type="checkbox"/> 2.852-802.0	Blue spot light
<input type="checkbox"/> 6.373-014.0	Comfort seat
<input type="checkbox"/> 2.851-287.0	Dust control cover for side broom
<input type="checkbox"/> 6.987-469.0	Main brush, soft
<input type="checkbox"/> 6.987-442.0	Main brush, hard
<input type="checkbox"/> 6.987-443.0	Main brush, natural
<input type="checkbox"/> 6.987-466.0	Side brush, soft
<input type="checkbox"/> 6.987-468.0	Side brush, hard
<input type="checkbox"/> 6.987-691.0	Flat pleated filter, white - 2 required to fill the filter compartment
<input type="checkbox"/> 6.961-928.7	Stainless steel hopper - special order
<input type="checkbox"/> 8.638-962.0	Protection roof, factory install
<input type="checkbox"/> 8.638-963.0	Open cab, factory install
<input type="checkbox"/> 8.638-964.0	Cab with windscreen, wiper and plastic cladding, factory install
<input type="checkbox"/> 8.638-965.0	All-weather cab, regular, factory install
<input type="checkbox"/> 8.638-966.0	All-weather cab with heating, factory install (special order)
<input type="checkbox"/> 8.638-967.0	All-weather cab with heating and air conditioning, factory install (special order)
<input type="checkbox"/> 8.638-968.0	Left side broom, factory install
<input type="checkbox"/> 8.638-969.0	Water spray dust control system, factory install
<input type="checkbox"/> 2.851-287.0	Dust control cover

■ Included Optional

Please contact us for more information:

Kärcher U.S.A.

6398 N Kärcher Way
Aurora, CO 80019
U.S.A.

Phone 888-805-9852
Fax 800-248-8409

www.karcher.com/us